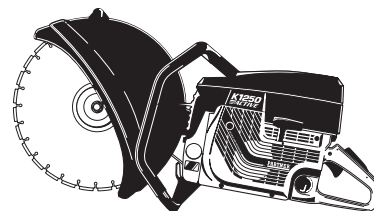


PARTNER



IPL, K 1250 Active, K 1250 RAIL, 2002-10, 106 24 94-64

K 1250 Active
K 1250 RAIL

Reservdelar

Spare parts

Ersatzteile

Pieces de rechange

Piezas de repuesto

Ricambi

Peças
sobresselente

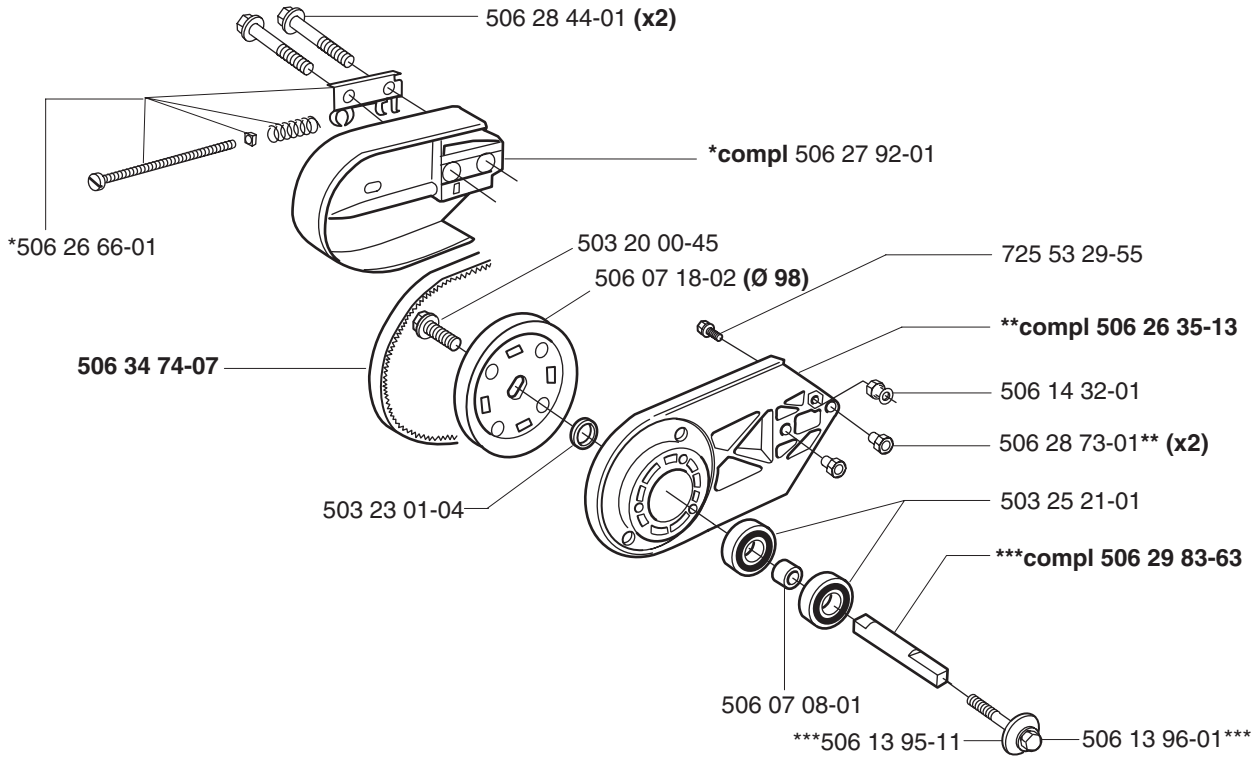
106 24 94-64

PARTNER[®]

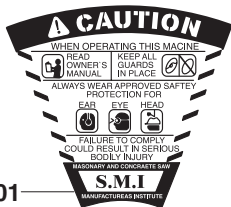
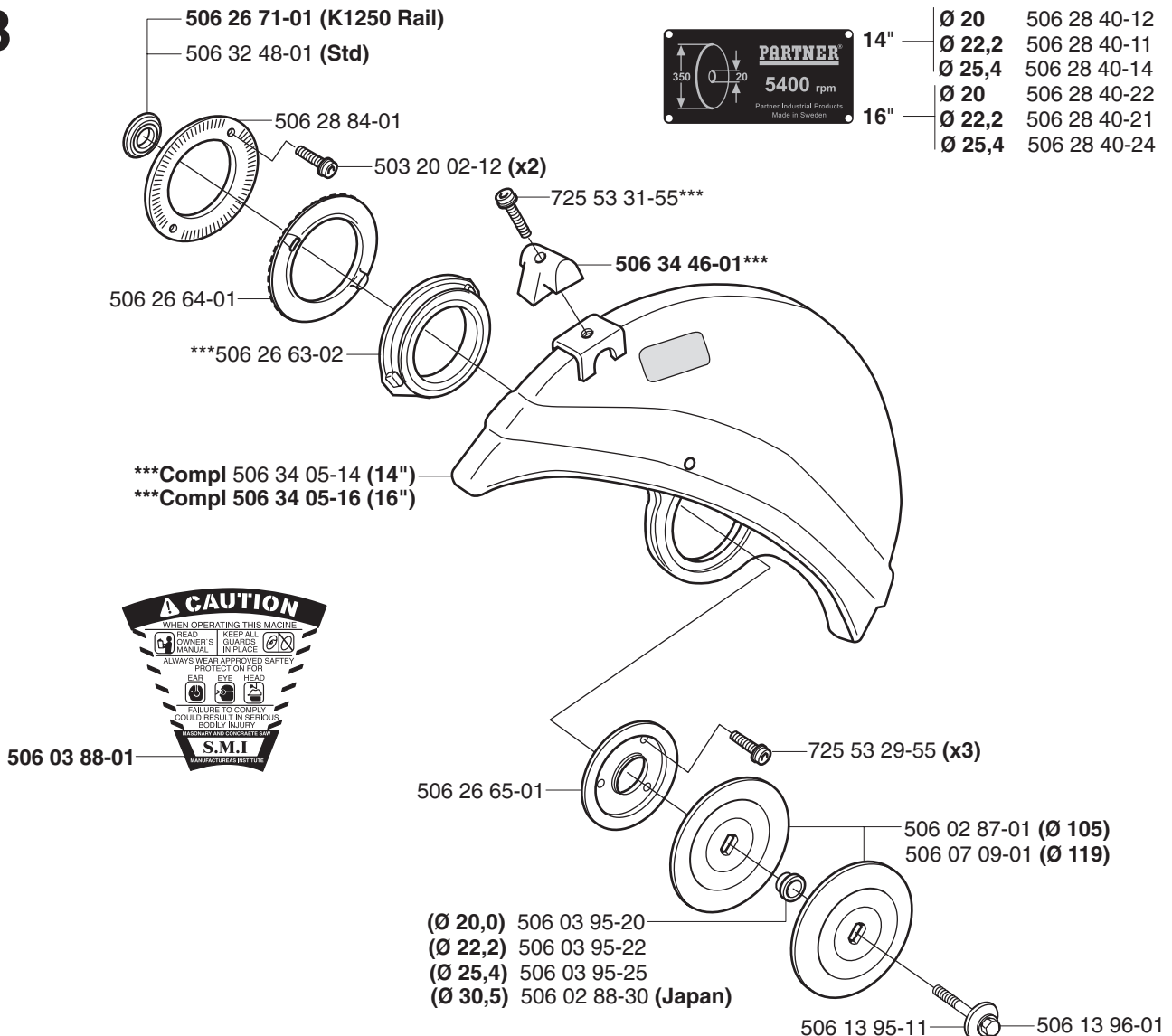
No.	Pos.	Description	No.	Pos.	Description
501 26 97-04	D	Antivib element	503 21 75-65	L	Bolt
501 27 08-01	D	Sleeve	503 21 90-08	J	Screw
501 46 75-01	M	Gasket	503 22 00-01	CD	Nut m6mf m8
501 46 84-01	M	Spring	503 22 10-03	J	Nut m10x1
501 46 85-01	M	Ball	503 22 20-07	E	Nut
501 48 54-02	J	Spark plug conn.	503 22 65-04	G	Nut
501 63 48-01	J	Spring	503 22 66-01	Q	Nut
501 66 61-01	M	Screen	503 23 00-05	E	Washer 6.5x11
501 67 32-03	J	Pawl	503 23 00-42	J	Washer 10x5,3x1
501 69 17-02	N	Combination tool	503 23 01-04	A	Washer 15x21
501 69 28-01	M	Cover	503 23 43-02	H	Washer
501 76 83-04	G	Hose	503 23 51-09	D	Spark plug rcj6y
501 81 47-01	G	Antivib element	503 25 00-02	DF	Ball bearing 6203 c3
501 81 57-01	D	Bolt	503 25 21-01	AQ	Ball bearing
501 81 99-01	J	Screw M5x14	503 25 38-01	C	Needle bearing
501 83 98-03	J	Lead	503 26 02-05	D	Sealing ring
501 89 25-73	D	Crankcase cpl.	503 26 30-21	P	O-ring
501 89 41-03	E	Piston cpl.	503 28 12-17	LM	Carburettor
501 89 50-03	J	Flywheel cpl.	503 28 90-26	E	Piston ring
501 89 59-02	H	Air conductor (std)	503 52 58-01	M	Choke flap
501 89 59-03	H	Air conductor (rail stop)	503 52 59-01	M	Spring
501 89 67-01	H	Pulley	503 52 60-01	M	Pin
502 10 31-01	M	Bushing	503 56 34-01	M	Inlet needle
503 11 72-01	M	Gasket	503 56 45-01	M	Sealing ring
503 11 73-01	M	Diaphragm	503 57 42-01	M	Welch plug
503 11 75-01	M	Screw with washer	503 57 76-02	G	Hose 300 mm
503 12 79-02	H	Starter handle	503 57 89-01	G	Holder
503 13 00-02	E	Muffler cpl.	503 59 55-01	M	O-ring
503 13 13-04	E	Gasket	503 59 56-01	M	Lever
503 13 16-01	G	Throttle catch	503 59 57-01	M	Lever
503 13 18-01	G	Spring	503 59 58-01	M	Cover
503 13 20-01	D	Grommet	503 59 59-01	M	Throttle shaft
503 13 24-01	J	Grommet	503 59 65-01	M	Screw
503 13 25-01	G	Antivib element	503 59 72-01	M	Washer
503 13 26-01	G	Antivib element	503 59 74-02	M	Diaphragm set
503 13 27-01	G	Antivib element	503 59 84-01	M	Nipple
503 13 29-01	EF	Needle bearing	503 63 24-01	M	Throttle valve
503 13 36-01	G	Throttle lever	503 63 28-01	M	Diaphragm
503 13 46-01	EF	Gasket	503 63 29-01	M	Screw (idle speed)
503 13 50-01	H	Recoil spring	503 63 31-01	M	Spring
503 14 05-01	G	Plate	503 63 32-01	M	Screw (low speed)
503 14 08-01	G	Bushing	503 66 56-01	E	Valve
503 14 20-73	F	Crankshaft cpl.	503 90 17-01	J	Ignition module
503 14 21-07	G	Tank unit cpl.	503 97 66-01	M	Jet
503 14 23-01	G	Throttle catch, kit	504 35 72-01	G	Tank vent filter
503 14 37-01	L	Sealing	505 31 67-17	M	Screw
503 14 49-01	C	Clutch cpl.	505 31 67-23	M	Lever spring
503 14 51-01	C	Clutch spring	505 31 67-31	M	Lever axle
503 14 54-02	D	Grommet	505 31 67-34	M	Lever
503 19 22-01	M	Screw	505 31 67-37	M	Spring
503 20 00-45	A	Screw	505 31 67-48	M	Washer
503 20 02-10	G	Screw	506 02 83-01	M	Washer
503 20 02-12	BDGQ	Screw	506 02 87-01	B	Flange washer Ø 105
503 20 02-16	Q	Screw	506 02 88-30	B	Bushing
503 20 02-20	DL	Screw	506 03 88-01	B	Warning lable
503 20 02-25	G	Screw	506 03 95-20	B	Bushing
503 20 02-30	GK	Screw	506 03 95-22	B	Bushing
503 20 02-65	D	Screw	506 03 95-25	B	Bushing
503 20 03-12	G	Screw	506 07 08-01	AQ	Spacer
503 20 25-20	J	Screw	506 07 09-01	B	Flange washer Ø 119
503 20 30-11	Q	Screw	506 07 18-02	A	Pulley
503 20 34-25	HK	Screw	506 09 56-02	P	Clamp
503 20 34-55	K	Screw	506 13 95-11	AB	Washer
503 21 05-25	G	Screw	506 13 96-01	AB	Screw
503 21 06-16	H	Screw	506 14 32-01	A	Catch
506 21 06-19	P	Screw	506 14 90-01	G	Support
503 21 06-32	G	Screw	506 22 75-01	Q	Sleeve
503 21 45-16	G	Screw	506 23 18-01	K	Housing
503 21 60-25	E	Screw	506 23 34-01	G	Protector
503 21 64-01	E	Bolt	506 23 70-01	D	Air jet

No.	Pos.	Description	No.	Pos.	Description
506 24 10-71	L	Intake pipe	506 31 86-01	J	Stop switch
506 24 13-01	L	Air horn	506 32 21-02	K	Decal
506 24 14-01	D	Cutting arm	506 32 48-01	B	Sleeve
506 25 01-01	G	Support	506 32 87-01	P	Y-tube
506 25 02-01	L	Insert	506 32 89-03	P	Wet cutting kit
506 25 03-01	K	Insert	506 33 56-25	H	Starter rope
506 25 04-01	L	Support , carburettor	506 34 05-14	B	Guard 14"
506 25 43-01	D	Choke control	506 34 05-16	B	Guard 16"
506 25 46-01	L	Guide	506 34 05-24	Q	Guard 14" (rail)
506 25 49-02	C	Drive wheel (16")	506 34 05-26	Q	Guard 16" (rail)
506 25 49-03	C	Drive wheel (14")	506 34 14-01	E	Cooling plate
506 25 53-01	G	Handle	506 34 46-01	BPQ	Handle
506 25 56-01	K	Filter cover	506 34 74-07	A	Belt
506 25 57-01	K	Filter base	506 34 74-38	Q	Belt (rail 16")
506 25 58-01	H	Starter housing	506 35 27-01	P	Spring
506 25 59-32	G	Tank cap cpl	506 35 80-01	R	Clamp
506 26 35-13	A	Housing	506 35 90-01	R	Cable assy
506 26 41-01	G	Fuel filter	506 35 91-01	R	Stop switch (lh)
506 26 41-11	G	Fuel filter cpl	506 35 91-02	R	Stop switch (rh)
506 26 63-02	BQ	Lining	506 35 96-01	R	Spacer
506 26 64-01	B	Flange	530 03 50-15	M	Screw, shutter
506 26 65-01	B	Flange	535 03 94-01	R	Bracket
506 26 66-01	AQ	Tensioner	537 00 28-01	M	O-ring
506 26 68-01	Q	Spring	537 00 29-01	M	Insert
506 26 70-31	Q	Housing	537 00 30-01	M	Choke shaft
506 26 70-38	Q	Housing	537 00 31-01	M	Screw
506 26 71-01	B	Sleeve (k1250 rail)	537 15 34-01	M	Jet
506 26 84-01	CQ	Sleeve	720 12 40-20	G	Pin
506 26 87-01	K	Foam filter	720 12 78-06	G	Pin 4x35
506 26 97-02	D	Plug	721 42 06-00	D	Pin
506 27 11-01	G	Fuel filter weight	725 53 29-55	AB	Screw mc6s 5x16
506 27 17-01	C	Clutch cover	725 53 31-55	BDQ	Screw mc6s 5x20
506 27 18-01	C	Decal	725 53 39-55	D	Screw mc6s 5x40
506 27 43-01	L	Gasket	725 53 41-55	G	Screw mc6s 5x50
506 27 49-01	E	Exhaust pipe	725 53 68-55	EG	Screw mc6s 6x16
506 27 54-01	K	Cylinder cover	725 53 70-55	DG	Screw mc6s 6x20
506 27 55-01	H	Starter cpl.	729 53 27-71	R	Screw
506 27 84-21	K	Decal EPA	729 53 40-01	E	Screw
506 27 84-22	K	Decal CE	735 11 73-50	J	Spring washer
506 27 87-01	E	Support, muffler	735 88 06-00	F	Woodruff key
506 27 89-01	H	Decal	737 44 13-00	E	Clip
506 27 90-01	K	Decal K1250			
506 27 91-01	K	Decal, instruction			
506 27 92-01	A	Cover, belt			
506 27 92-31	Q	Cover, belt			
506 27 92-38	Q	Cover, belt			
506 28 39-30	K	Sealing			
506 28 40-11	B	Label 14-22,2			
506 28 40-12	B	Label 14-20			
506 28 40-14	B	Label 14-25,4			
506 28 40-21	B	Label 16-22,2			
506 28 40-22	B	Label 16-20			
506 28 40-24	B	Label 16-25,4			
506 28 44-01	A	Bolt			
506 28 59-01	C	Spacer sleeve			
506 28 73-01	A	Nut			
506 28 84-01	BQ	Flange			
506 28 97-01	L	Flange, intake			
506 28 98-01	G	Throttle wire cpl.			
506 29 21-01	G	Gasket			
506 29 24-02	N	Gasket set			
506 29 39-01	G	Tank vent			
506 29 42-71	E	Cylinder cpl			
506 29 56-01	P	Nipple			
506 29 57-01	P	Nipple			
506 29 81-01	Q	Decal			
506 29 83-63	AQ	Shaft			
506 29 88-01	P	Screw			
506 31 38-01	L	Insert			
506 31 77-11	P	Valve cpl			

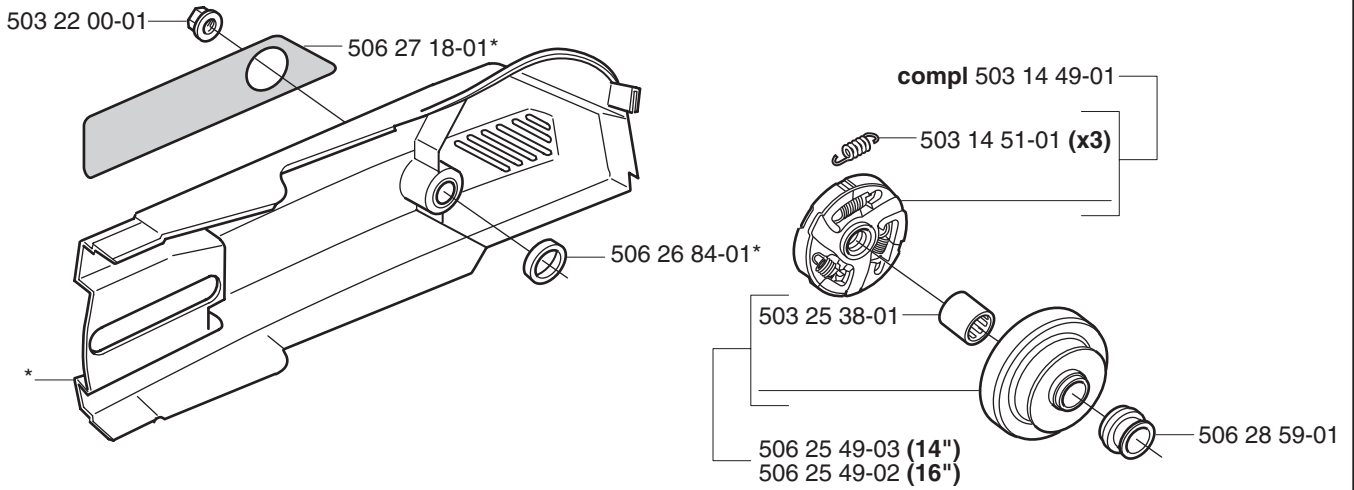
A



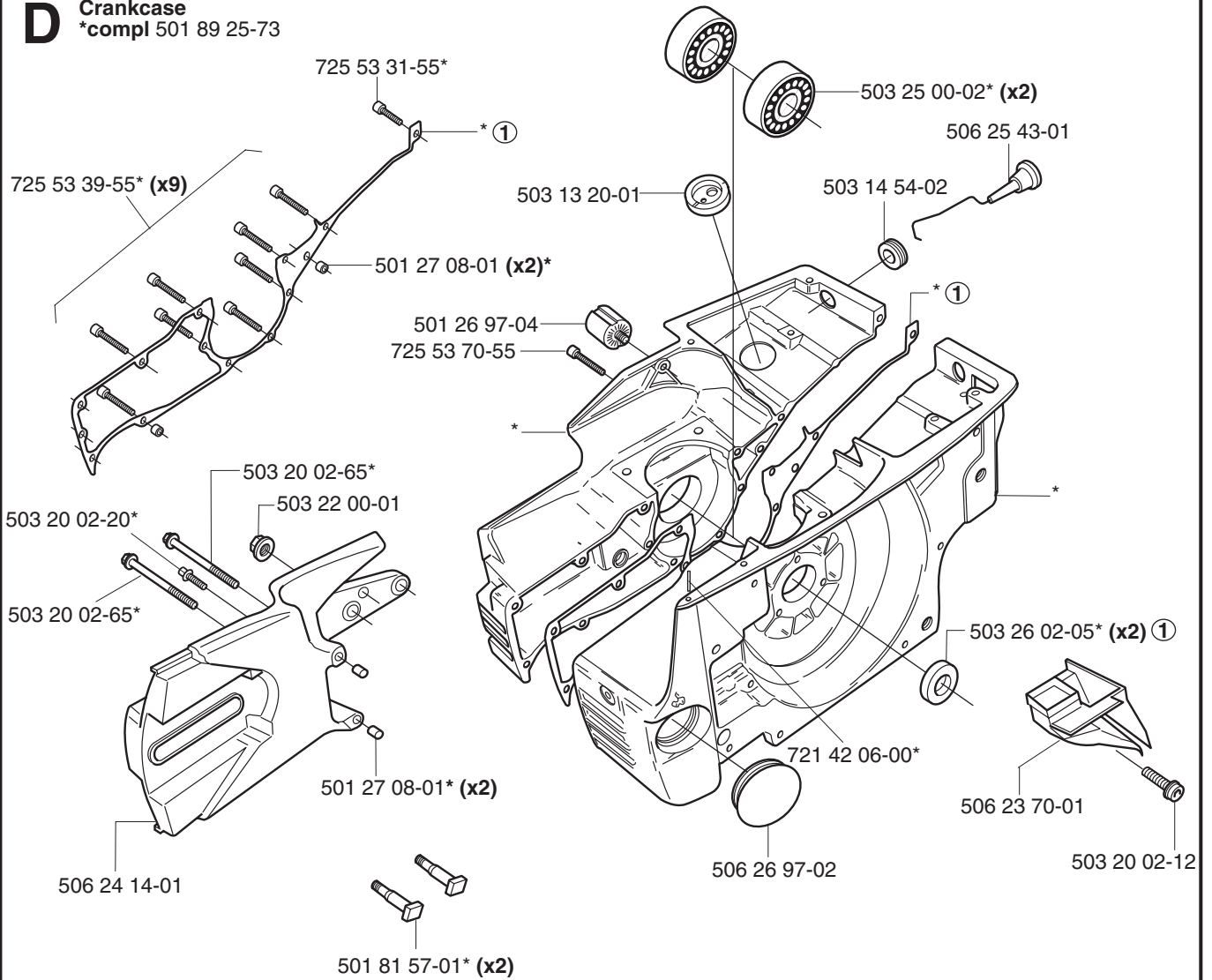
B



C *compl 506 27 17-01

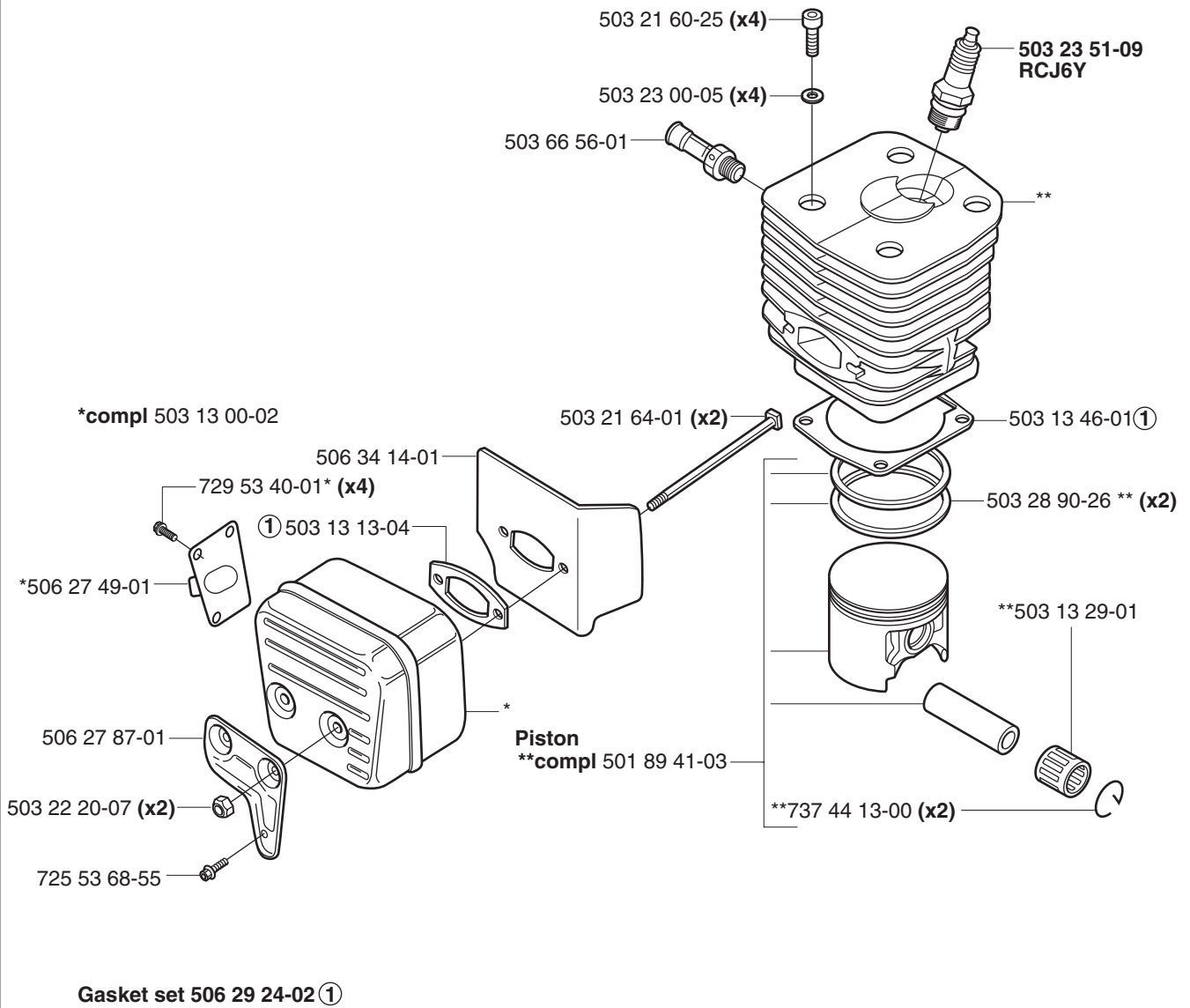


D Crankcase
*compl 501 89 25-73

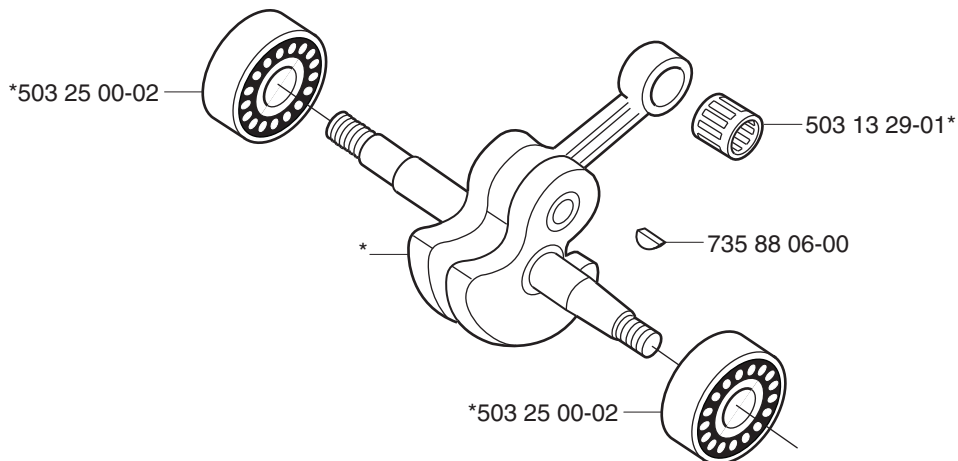


① Gasket set 506 29 24-02

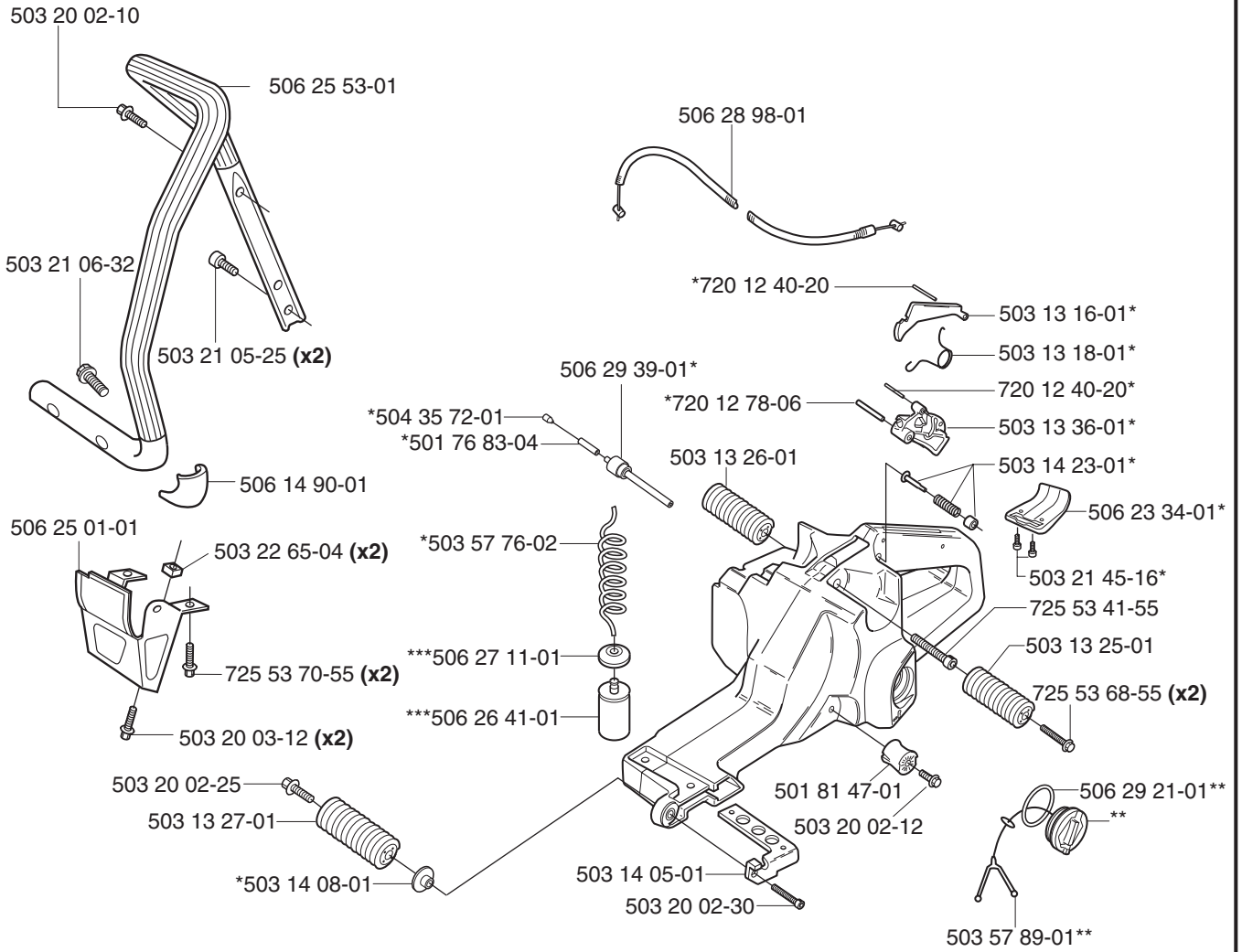
E Cylinder
****compl** 506 29 42-71



F *compl 503 14 20-73



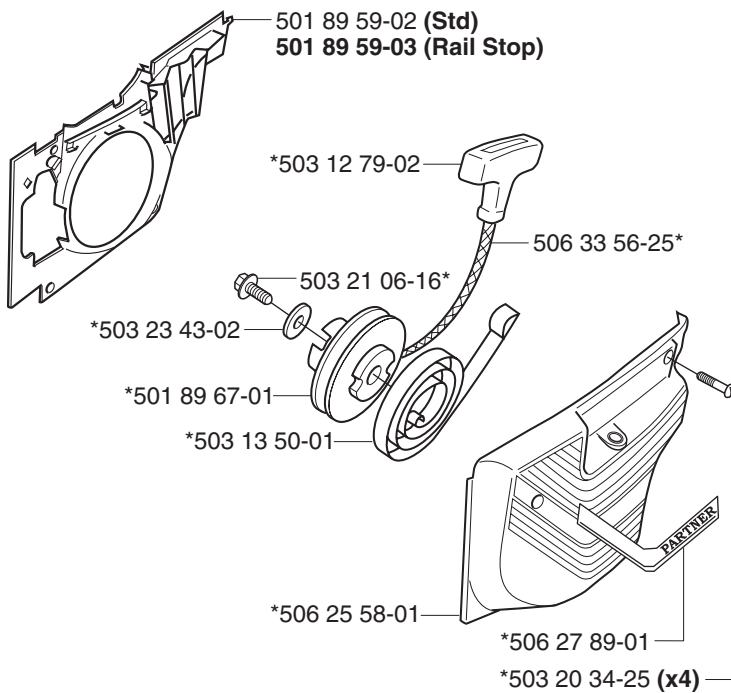
G Tank unit
*compl 503 14 21-07



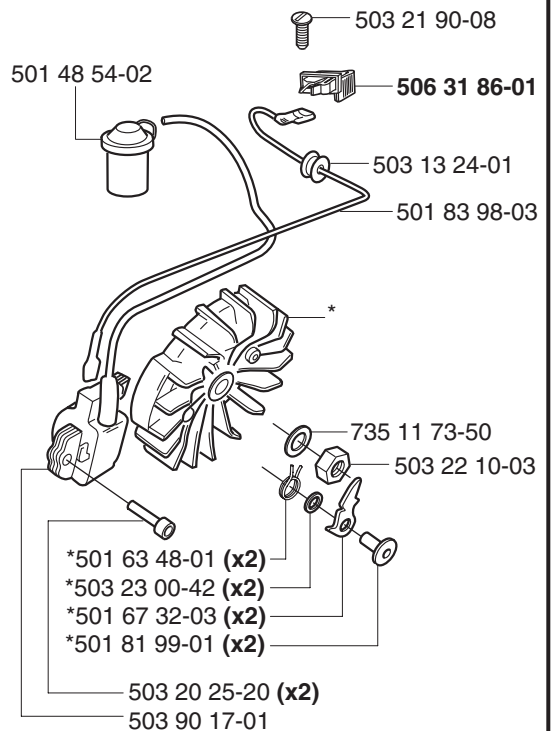
*** compl 506 26 41-11

**compl 506 25 59-32

H Starter
*compl 506 27 55-01



J Flywheel
*compl 501 89 50-03



K



506 27 84-22
CE



506 27 84-21
EPA USA
EPA Canada

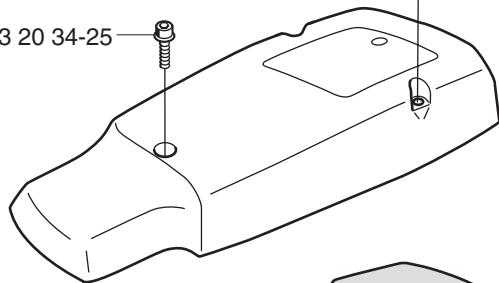
Decompression Valve
Push before starting

506 32 21-02



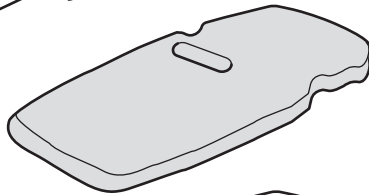
503 20 34-55 (x2)

503 20 34-25

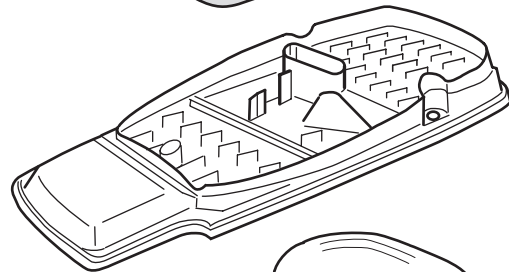


506 25 56-01

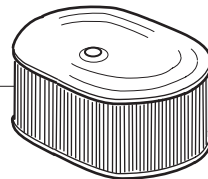
506 26 87-01



506 25 57-01



506 23 18-01



*506 28 39-30



503 20 02-30 (x4)



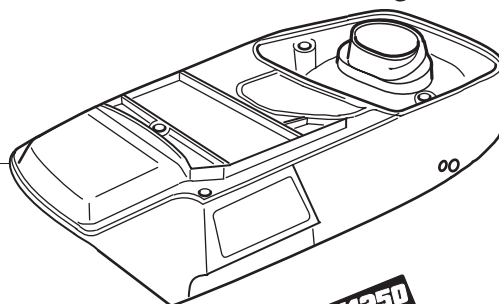
506 25 03-01



506 27 91-01*

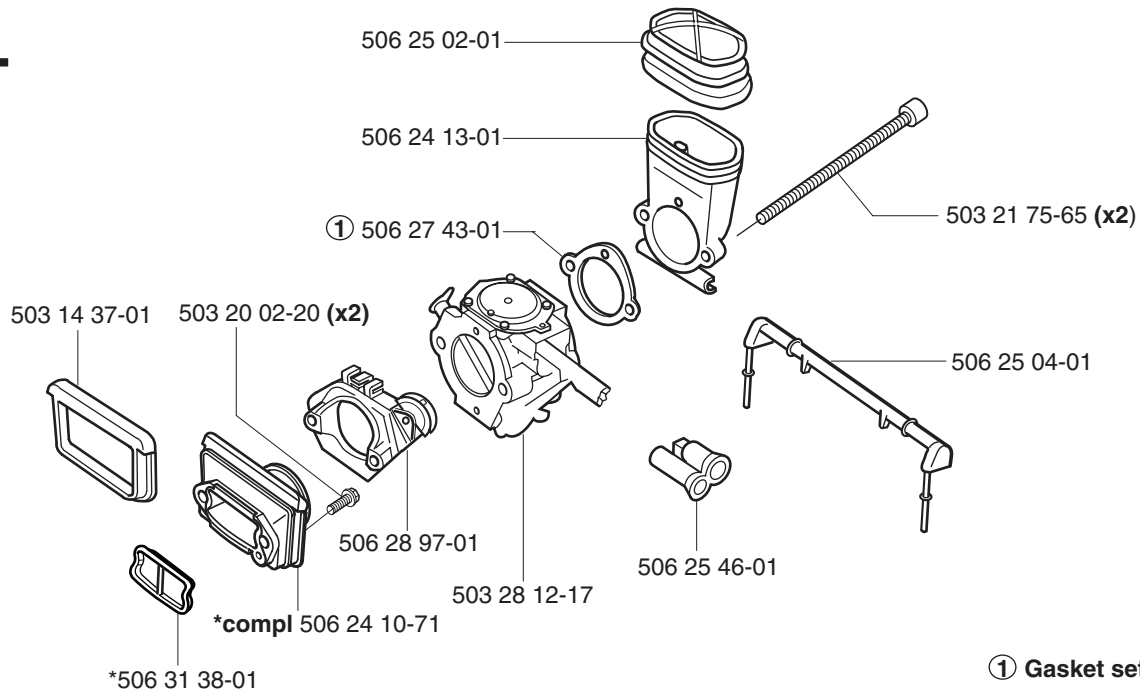


*compl 506 27 54-01

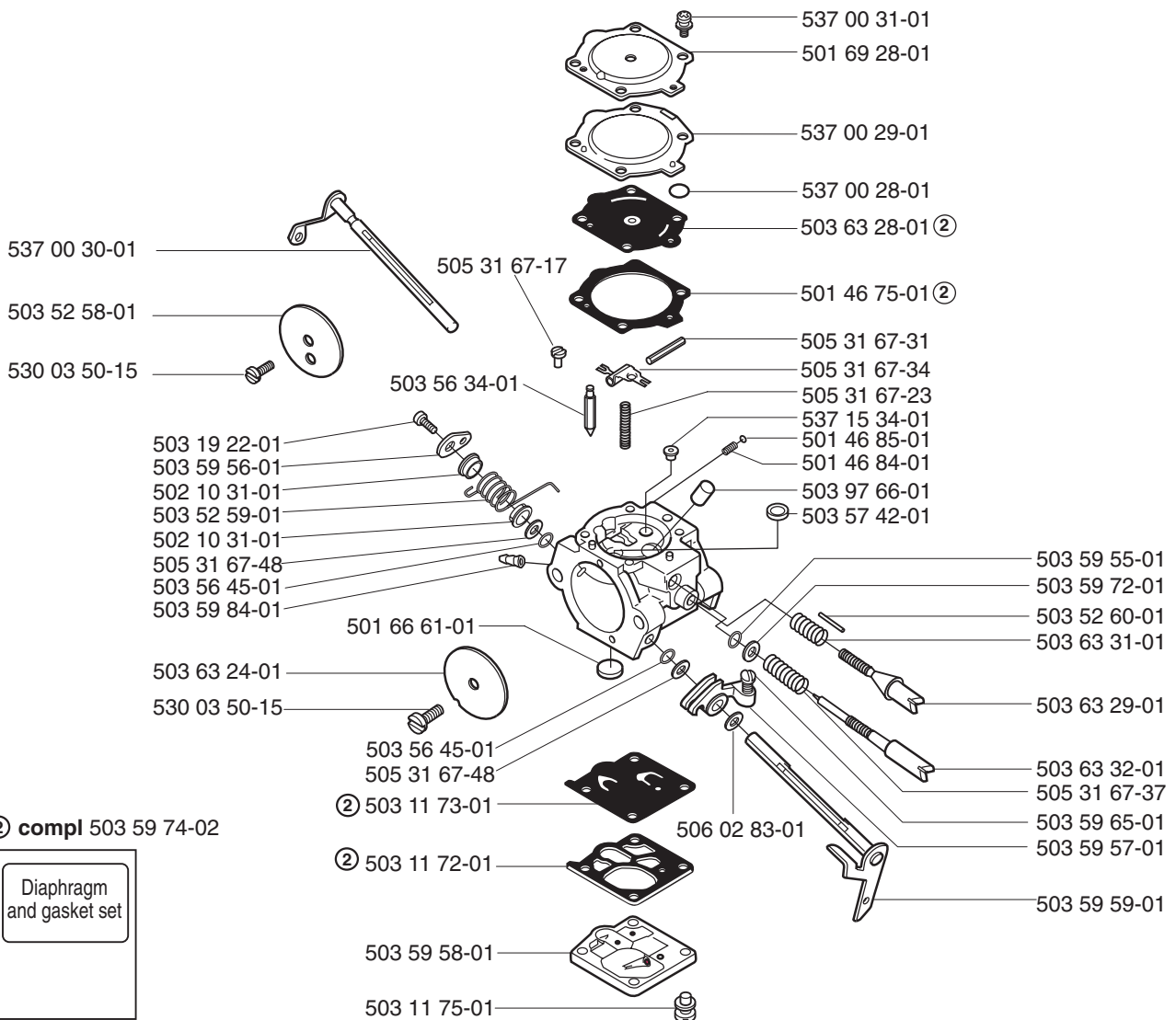


506 27 90-01*



L

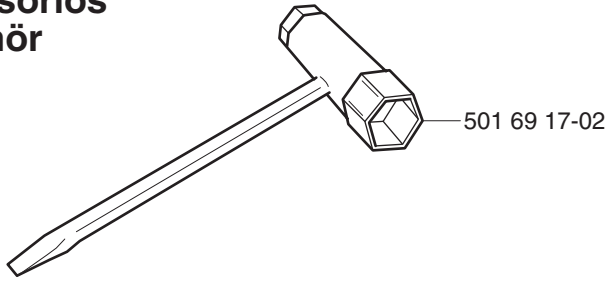
① Gasket set 506 29 24-02

M Carburettor
compl 503 28 12-17 Walbro WG 9

② compl 503 59 74-02

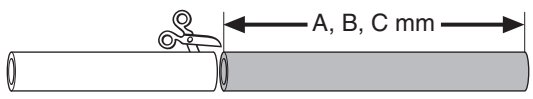
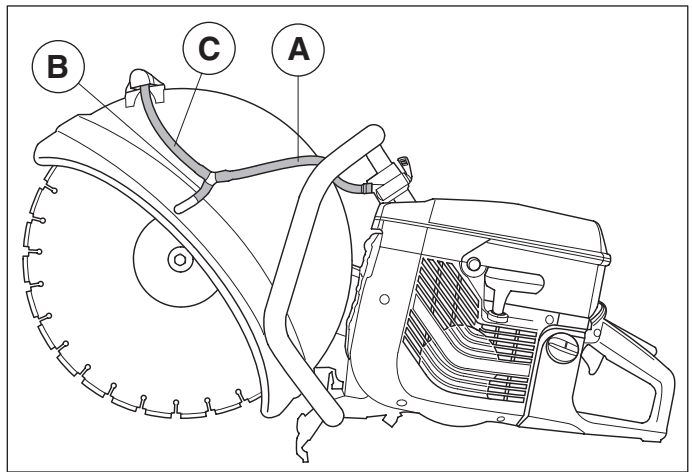
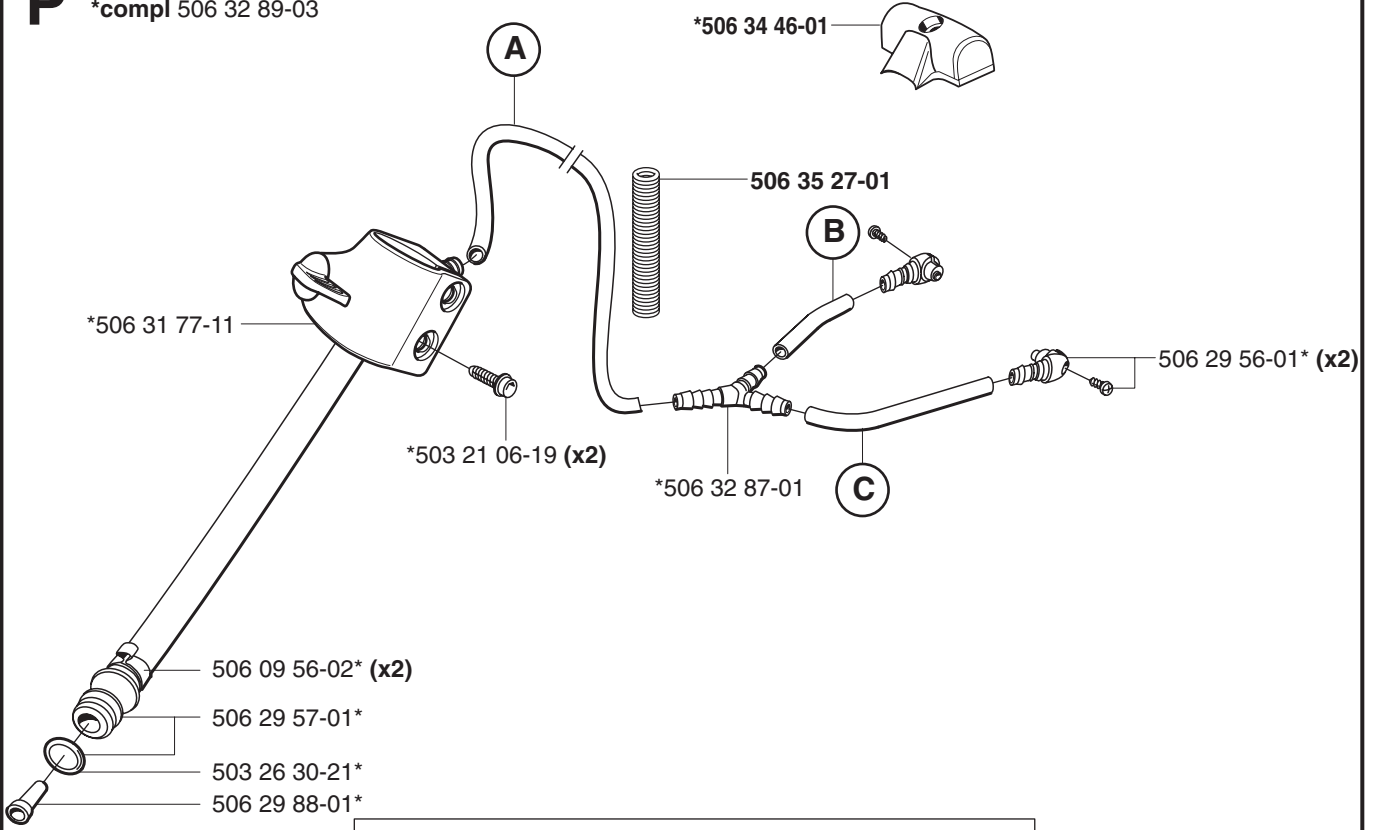
Diaphragm
and gasket set

N Accessories
 Zubehöre
 Accessoires
 Accesorios
 Tillbehör



506 29 24-02 ①

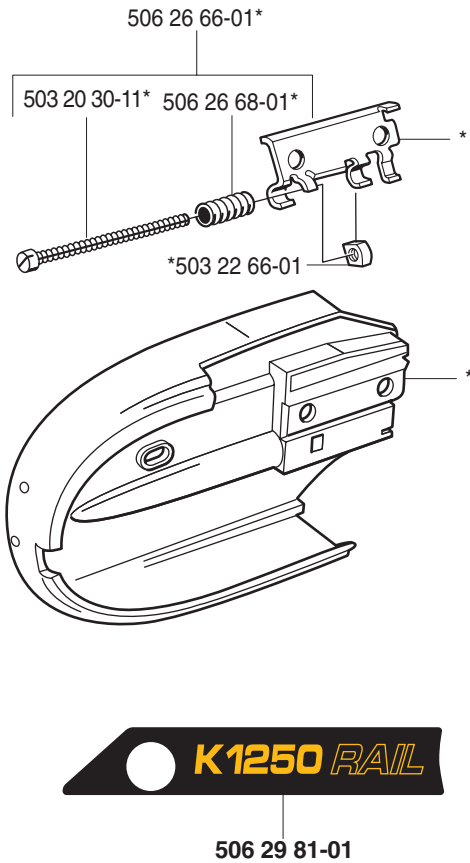
P Wet cutting kit
 *compl 506 32 89-03



Product	A (mm)	B (mm)	C (mm)
K1250A 14"	280	45	280
16"	270	45	360

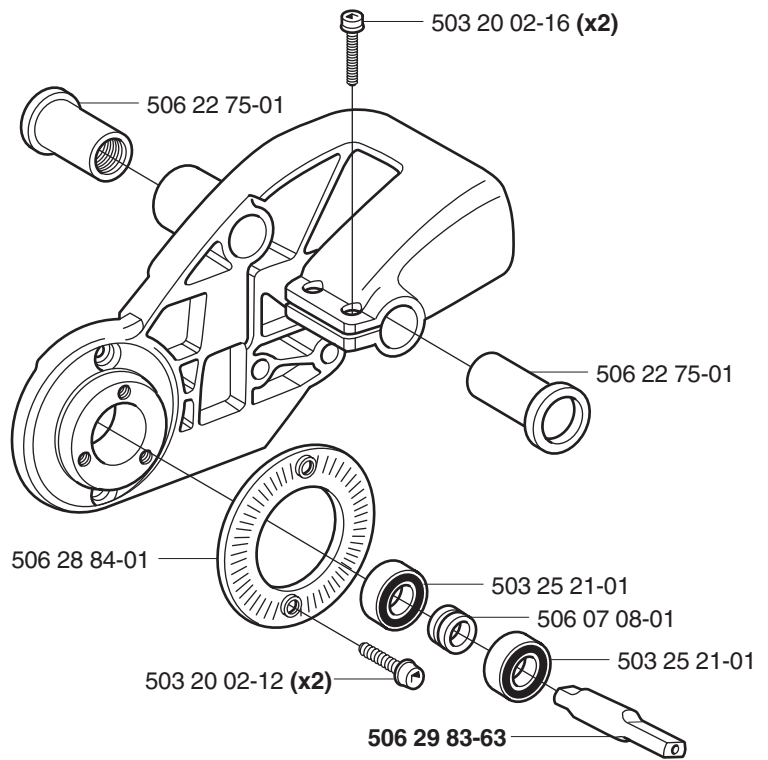
Q K1250 RAIL

*compl 506 27 92-31 14"
*compl 506 27 92-38 16"



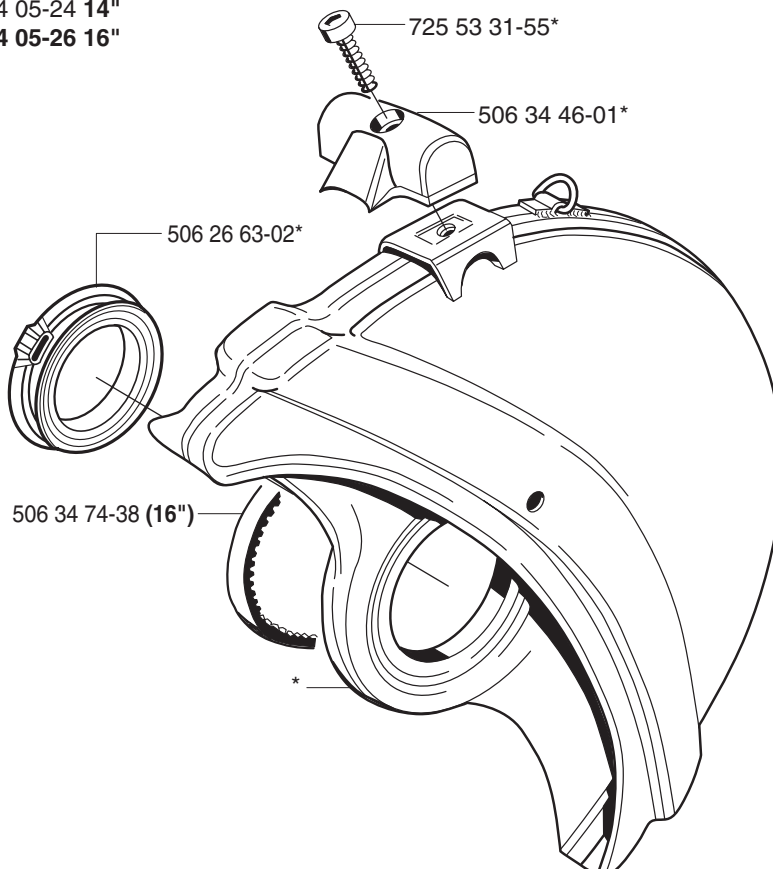
Q K1250 RAIL

compl 506 26 70-31 14"
compl 506 26 70-38 16"



Q K1250 RAIL

*compl 506 34 05-24 14"
*compl 506 34 05-26 16"



R K1250 RAIL

Cut-out switch system, 14"/350mm, 16"/400mm.

